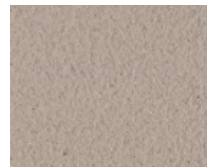


RENDER COLOR CHART

Available Stock Colors

	Not applicable for HempBLOCK wall coating										
B10 1005-B 0,30	BL10** 0500-N 0,22	G00 0502-Y50R 0,24	G10 0804-Y30R 0,25	G16 3502-R 0,68	G20 1005-Y20R 0,27	G30 1502-Y50R 0,43	G40 3005-Y20R 0,61	G50 2500-N 0,60	G71 2505-Y 0,66	G76 2005-R90B 0,57	J10 1020-Y30R 0,37
											
J20 0907-Y10R 0,30	J30 0515-Y20R 0,41	J39 0907-Y30R 0,30	J40 1010-Y20R 0,31	J50 1020-Y20R 0,33	J60 1030-Y20R 0,40	J70 1040-Y20R 0,41	O10 0507-Y40R 0,29	O20 0515-Y50R 0,33	O30 0505-Y50R 0,28	O40 1015-Y30R 0,41	O50 1010-Y60R 0,36
											
O60 1020-Y50R 0,38	O70 2020-Y30R 0,48	O80 2030-Y40R 0,50	O90 2040-Y60R 0,53	R10 1010-Y80R 0,29	R20 1015-Y40R 0,33	R30 1510-Y60R 0,44	R40 1515-Y50R 0,43	R50 1020-Y60R 0,47	R60 1015-Y70R 0,39	R70 2030-Y70R 0,48	R80 3030-Y70R 0,58
											
R90 3040-Y80R 0,67	T10 1505-Y60R 0,45	T20 0507-Y40R 0,30	T30 2010-Y20R 0,60	T40 0907-Y50R 0,33	T50 1010-Y30R 0,35	T60 2010-Y 0,54	T70 1015-Y30R 0,50	T80 1510-Y20R 0,44	T90 1510-Y40R 0,43	V10 1005-Y10R 0,41	V20 0804-G20Y 0,35

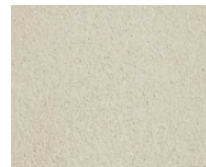
Finish Options



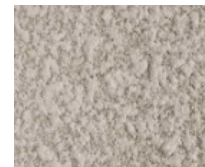
Fine Finish



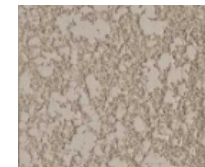
Medium Finish



Trowelled



Rustic



Rustic 'crushed'



Balinese or
Moroccan style

RENDER COLOR CHART

Colors to be ordered

 B23 1015-R80B 0,34	 B33 2040-R90B 0,39	 B42 2020-R80B 0,41	 B62 4030-R80B 0,74*	 B68 4502-R 0,77*	 B112 4020-R40B 0,80*	 G60 5500-N 0,84*	 G68 4010-R30B 0,69	 G78 1510-R60B 0,45	 G84 6010-Y30R 0,77*	 G95 6502-B 0,88*	 G101 2010-R 0,43
 G108 4005-Y20R 0,76*	 G117 7005-R80B 0,90*	 G132 5010-R30B 0,75*	 G162 4005-Y80R 0,68	 J29 1020-Y20R 0,35	 J33 1015-Y20R 0,34	 J53 1030-Y30R 0,40	 J91 1040-Y10R 0,48	 O74 2040-Y20R 0,46	 O84 3030-Y20R 0,62	 O88 4030-Y40R 0,70	 O138 5020-Y20R 0,78*
 O147 3020-Y30R 0,66	 O181 2050-Y30R 0,50	 O225 3060-Y60R 0,54	 R32 2020-Y80R 0,54	 R64 3020-Y80R 0,53	 R91 3040-Y90R 0,56	 R93 4040-Y80R 0,68	 R211 4030-Y90R 0,79*	 T28 3010-R 0,62	 T48 1010-Y40R 0,35	 T106 1515-Y20R 0,54	 T148 5020-Y10R 0,82*
 T153 2010-Y40R 0,54	 T164 3020-Y60R 0,67	 T167 4020-Y90R 0,78*	 T177 3010-Y50R 0,65	 T181 5020-Y50R 0,80*	 T184 5010-Y70R 0,80*	 T193 1515-Y30R 0,53	 V17 3020-G30Y 0,50	 V45 2010-B90G 0,45	 V59 4010-G30Y 0,65	 V84 3020-G 0,51	 V87 2030-G90Y 0,44

THESE ARE THE CHARACTERISTICS OF THE LIME PAREXAL RENDER:

- **Water absorption:** Wc 2
- **Reaction to fire:** A1
- **Apparent Density:** 1,400 kg / m³
- **Modulus of elasticity:** 2,700 MPa
- **Flexural strength (average at 28 days):** 1 MPa
- **Water vapor permeability:** greater than 0.8 g/m². h. mm Hg.
- **Water vapor permeability μ *:** ≤ 12
- **Sd value:** about 0.12 m (for a thickness of 10 mm)

The colors of this color chart are presented on a computer screen, devise or printed on paper and may be subject to certain variations. It is advised to look at a real sample.

* Colors with a solar absorption coefficient exceeding 0.7

These strong colors are more sensitive to the phenomena of nuance and efflorescence as well as to climatic constraints. Their use therefore requires an implementation adapted to humidity and temperature conditions.